



# INTERNATIONAL INDIAN SCHOOL, TABUK

TERM- 1 (SESSION: 2025-26)

## PRACTICE SHEET- 1

**CLASS: V**

**SUBJECT: EVS**

### TOPIC: 1. OUR ORGAN SYSTEM

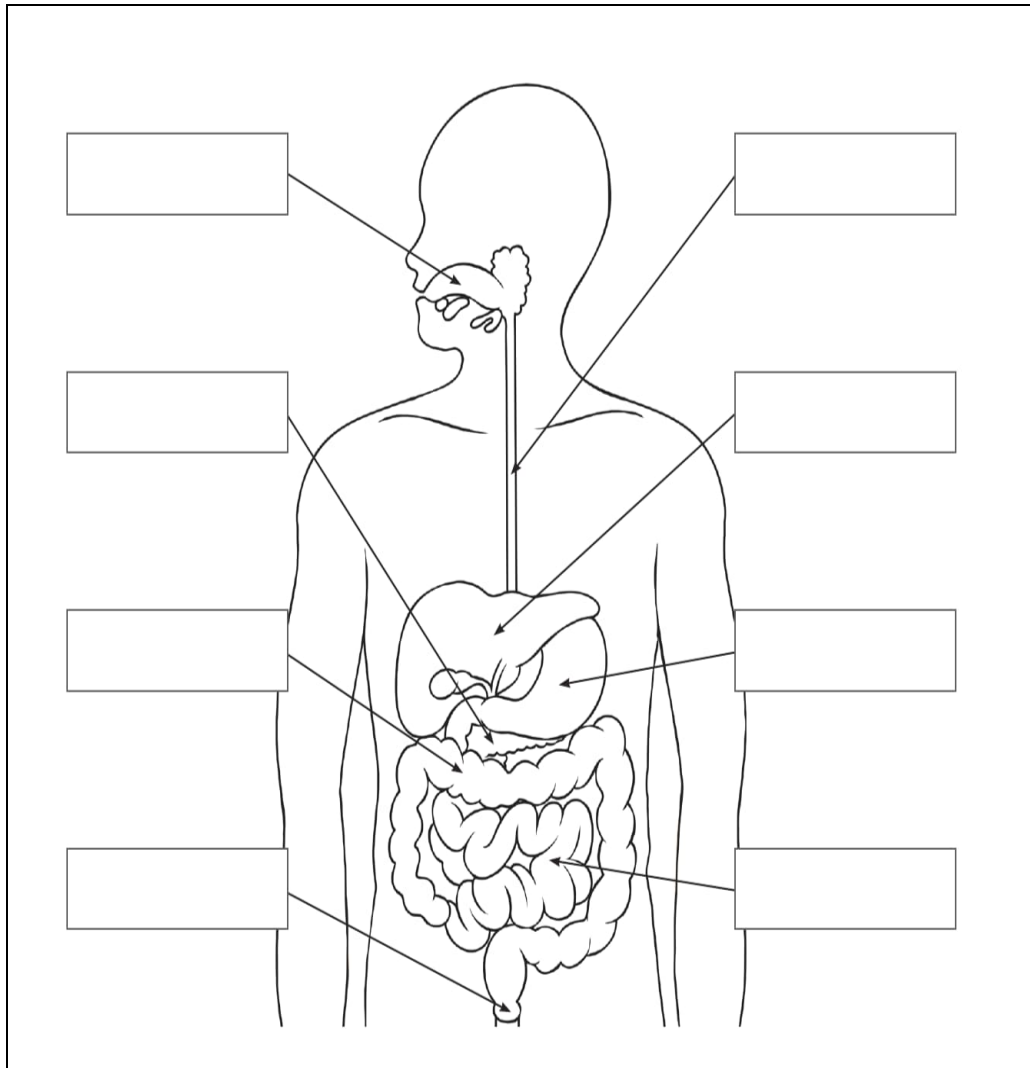
I	<p><b>Choose the correct options.</b></p> <p>1. The process of digestion starts in the</p> <p>(a) food pipe      (b) stomach      (c) mouth</p> <p>2. Bile is a digestive juice made by</p> <p>(a) kidney      (b) stomach      (c) liver</p> <p>3. This system supplies blood to all parts of the body.</p> <p>(a) Respiratory system      (b) Circulatory system      (c) Excretory system</p>
II.	<p><b>Fill in the blanks.</b></p> <p>1. The _____ connects mouth to the stomach.</p> <p>2. _____ are the filters of our body.</p> <p>3. There are _____ types of teeth in our mouth.</p> <p>4. _____ glands produce saliva.</p>
III.	<p><b>Assertion-Reason</b></p> <p><b>Choose the correct option.</b></p> <p>1. <b>Assertion(A):</b> Kidneys are the filtering machines of the body.</p> <p><b>Reason(R):</b> Kidneys filter waste from the blood.</p> <p>a) If both Assertion (A) and Reason (R) are true and R is correct explanation of A.</p> <p>b) If both A and R are true but R is not the correct explanation of A.</p> <p>c) A is true but R is false.</p> <p>d) A is false and R is true.</p>

**IV. Answer the following questions.**

1. List the four types of teeth in our mouth.

2. (a) Explain digestive system.

(b) Label the organs in the given diagram.



3. What functions do the following system performs?

(a) Respiratory

(b) Excretory

(c) Nervous

(d) Circulatory.

-----XXXXXX-----

